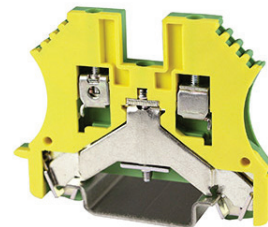




ASI431008



ASI431009

SPECIFICATIONS				
Wire Range	22-12 AWG		22-10 AWG	
Dimensions (L x H x W)	54 x 47 x 5 mm		60 x 47 x 6 mm	
Ordering Information	Order#	Pcs./Pkg.	Order#	Pcs./Pkg.
Terminal Block	ASI431008	50	ASI431009	50
Accessories				
End cover	ASIWAP105000	25		
Circuit Bridges				
Push-in 10 position	ASIUFBS105	10	ASIUFBS106	10
TB Markers Blank	ASKB512B 10 Strips of 10 Markers		ASIKB612B 10 Strips of 10 Markers	
End-Stop (snap-on)				
Black	ASIUD1B	25	ASIUD1B	25
DIN Rail (2 meters)				
7.5 x 35 mm Slotted	PR005	1	PR005	1
7.5 x 35 mm Non-Slotted	PR003	1	PR003	1
15 x 35 mm Slotted	PR006	1	PR006	1
15 x 35 mm Non-Slotted	PR007	1	PR007	1

The ASIWDU series of IEC terminal blocks is the first terminal block series that is totally compatible with manufacturers such as Weidmüller®. The ASIWDU terminal blocks feature the same quality design features and materials of the popular WDU series with added improvements including nickel plated copper alloy metal bodies and plated high tensile alloy crews. Careful attention to detail has been given to this product family so that accessories are interchangeable and the costs associated with using another brand are eliminated.

One of the added features with the ASIWDU series terminal blocks along with others of similar spacing, is the ability to use a low-cost plug-in jumper.

The ASIWDU series meets international approvals including UL and cUL and all products are RoHs compliant.

A short cross-reference is shown below while a more complete one that can be found at www.asi-ez.com or by calling ASI toll free at **877-650-5160**.

ASI Type	Weidmuller
ASIWDU2.5	WDU2.5
ASIWDU4	WDU4
ASIWDK2.5	WDK2.5
ASI431008	WPE2.5
ASI431009	WPE4